

Commercial Complex 秋葉原ラジオ会館

Akihabara Radio Kaikan

Bringing together Japanese sub-cultures!

A complex with a famous neon sign on its building. There's a lineup of various shops mainly related to comics, anime and games, and even stores selling audio equipment and security goods for professionals.

Address:1-15-16 Soto-Kanda, Chiyoda-ku
TEL:03-5807-7787

Opening hours:10:00-20:00 *Some shops may differ

Closed:Irregular holidays
Access:Immediate access from JR Akihabara Station Electric Town Exit

MAP P.144 B-3



1. Continues to diffuse subculture with figurines, trading cards, etc.
2. Contains 31 shops from B1F to 10F. There are many "maniac-level" specialized shops

For Tourists

At the "AZONE Labelshop" specialized in dolls on 7F, you can find parts to customize your favorite doll.



Gacha-Gacha 秋葉原ガチャボン会館

Akihabara Gachapon Kaikan

Find your favorite "Gacha-Gacha"

Japan's largest shop specialized in "Gacha-Gacha" capsule toys, with around 500 "Gacha-Gacha" machines lined up. New fun is always waiting, since the machines are changed every 2 to 3 weeks. Antique-style machines are also popular.

Address:3-15-5 Soto-Kanda, Chiyoda-ku
TEL:03-5209-6020 **Opening hours:**11:00-20:00, 11:00-22:00 on Fridays and Saturdays, 11:00-19:00 on Sundays and public holidays **Closed:**None **Access:**9 min. walk from JR Akihabara Station Electric Town Exit

MAP P.144 B-2



1. Offers a rich variety, from popular anime series up to unique lucky charms
2. The very popular series "Cup no Fuchiko-san", which you can put on the edge of a cup

For Tourists

The "Gacha-Gacha" is a machine selling different type of capsule toys. You can enjoy a feeling of excitement as you don't know what is going to come out of it.

Miscellaneous Goods イエローサブマリン秋葉原本店★ミント

Yellow Submarine Akihabara Flagship ★MINT

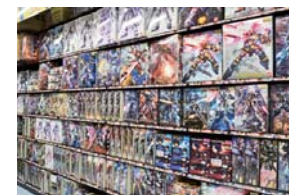
Enthralling for both adults and children!

More than 10,000 hobby-related items are available in the shop, including fighting cards, plastic models, board games, Gacha-Gacha, and more. Also offers coveted rare items for maniacs.

Address:Akihabara Radio Kaikan 6F, 1-15-16 Soto-Kanda, Chiyoda-ku **TEL:**03-3526-3828 **Opening hours:**10:00-20:00 **Closed:**Irregular holidays

Access:Immediate access from JR Akihabara Station Electric Town Exit

MAP P.144 B-3



Plastic models have become popular with the anime "Mobile Suit Gundam"

For Tourists

It is also the only place in the world to sell Gundam plastic models by parts

Nail Salon Nail Salon VenusRico

Nail Salon VenusRico

Nails decorated with your favorite characters are now a reality

Nails decorated with anime characters and logos are becoming a hot topic. Known for reproducing the finest details by hand and for its high-quality.

Address:Akihabara ST Bldg. 1F, 4-13-6 Soto-Kanda, Chiyoda-ku **TEL:**03-3257-5223

Opening hours:10:00-20:00 **Closed:**None **Fee:**From 5,500 yen **Access:**7 min. walk from JR Akihabara Station Electric Town Exit

MAP P.145 C-2



Game Center タイトーステーション 秋葉原本店

TAITO STATION Akihabara

An exciting entertainment facility

Proposing an assortment of the latest game machines, including crane games, virtual games, etc. They've also installed the "Choi KARA" machine, in which you can easily enjoy karaoke for 100 yen a song.

Address:Takami Bldg. 1F, 4-2-2 Soto-Kanda, Chiyoda-ku
TEL:03-5289-8445 **Opening hours:**10:00-24:00

Closed:None **Access:**5 min. walk from JR Akihabara Station Electric Town Exit

MAP P.144 B-2



Many of the prizes you can get from crane games are also of high-quality

For Tourists

The "Purikura (photo booth) Corner" as well is complete. Take a couple picture to commemorate the journey.