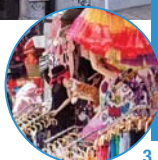




Takeshita Street

A fashion street born in 1974. Extending over a distance of about 350m from JR Harajuku Station to Meiji-dori. Lined with shops selling fashion items, miscellaneous goods, and gourmet food for young people. **MAP P.102 A-1**

1. The arch at the entrance of Takeshita Street. Balloon art changes regularly
2. Enjoy eating crepes and other delicious food while walking, and take a look at the large-scale facilities that have been opening up in recent years!
3. Rows of colorful, wacky items



Cotton Candy TOTTI CANDY FACTORY原宿店

TOTTI CANDY FACTORY Harajuku Shop

“KAWAII” candy with a huge impact

With a diameter of about 40cm, this huge and colorful cotton candy is very popular. It is made right in front of your eyes, so you can eat it fresh. Cotton candy from 600 yen. Other sweets also sold by weight.

Address: RYU Apartment 2F, 1-16-5 Jingumae, Shibuya-ku **TEL:** 03-3403-7007 **Opening hours:** 10:30-20:00 (10:30-19:00 between November and January), 9:30-20:00 on Saturdays, Sundays and public holidays **Closed:** Irregular holidays **Access:** 3 min. walk from JR Harajuku Station



Takeshita Exit **MAP P.102 A-1**

The “TOTTI 4-color Cotton Candy”. White is sugar, purple is grape flavored, orange is lemon flavored, and blue is soda pop flavored



1,2. Pleated skirts and T-shirts are classic items of SPINNS



Fashion スピンス 原宿竹下通り店

SPINNS Harajuku Takeshita Street Shop

A shop leading Harajuku fashion

Popular apparel shop that often appears in fashion magazines for young people. Offering men's and women's items, letting you to get trendy products at an affordable price.

Address: CUTE CUBE HARAJUKU 2F, 1-7-1 Jingumae, Shibuya-ku **TEL:** 0120-011-984

Opening hours: 10:00-20:00

Closed: Irregular holidays

Access: 5 min. walk from JR Harajuku Station Takeshita Exit



MAP P.102 A-1



Ura Harajuku

Birthplace of the unique fashion style “Urahara-kei” popular in the 1980s. Located on the east side of Meiji-dori, near Harajuku Street. This area brings together apparel shops and trendy cafés. **MAP P.102 B-1**



Fashion lilLilly TOKYO

lilLilly TOKYO

Real clothes for classy girls

With “clothes that can be worn only by girls” as concept, this store is lined with clothes that use materials such as lace and fur. It also offers items from its sister brand LILICIOUS.



Address: 4-27-6 Jingumae, Shibuya-ku **TEL:** 03-6721-1527 **Opening hours:** 12:00-20:00 **Closed:** Irregular holidays **Access:** 6 min. walk from

Tokyo Metro Meiji-Jingumae (Harajuku) Station Exit 5

MAP P.102 B-2



1. Cool, casual rompers with cute frill sleeves
2. Lip-shaped bag from the accessory brand LILICIOUS



Dresses from 17,500 yen. Size: one-size only

Fashion NILE PERCH原宿本店

NILE PERCH Harajuku Main Shop

If you're looking for fancy items, they're here!

Rows of cute items in a store in pastel colors. All products are original and handmade at the main shop. Customization is also possible, including a change of color and decoration, etc.

Address: Harajuku Y's Bldg. B1F, 4-26-27 Jingumae, Shibuya-ku **TEL:** 03-3408-1993

Opening hours: 11:00-20:00, 11:00-19:30 on Sundays and public holidays **Closed:** None

Access: 6 min. walk from Tokyo Metro Meiji-Jingumae (Harajuku) Station Exit 5



MAP P.102 B-2

